

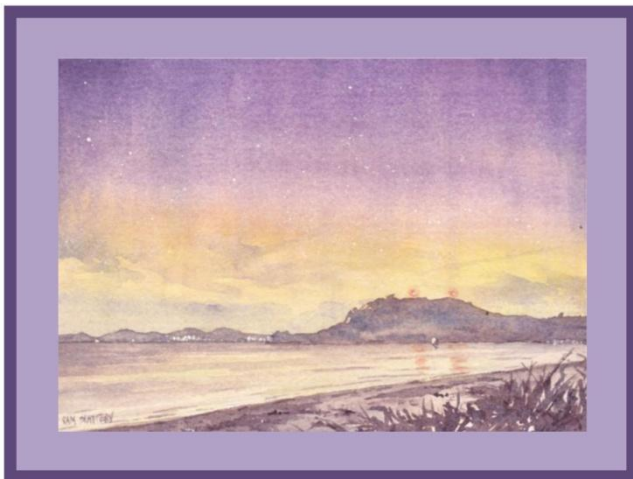
FRAMING WATERCOLOUR PAINTINGS

Watercolour paintings require special framing to preserve their life. They should not be hung in direct sunlight (due to fading), on a damp wall or over a heater, fireplace or air duct, as all these elements can damage the artwork over time. If the artist has used Artist quality paints and acid-free paper, the painting should last a very long time.

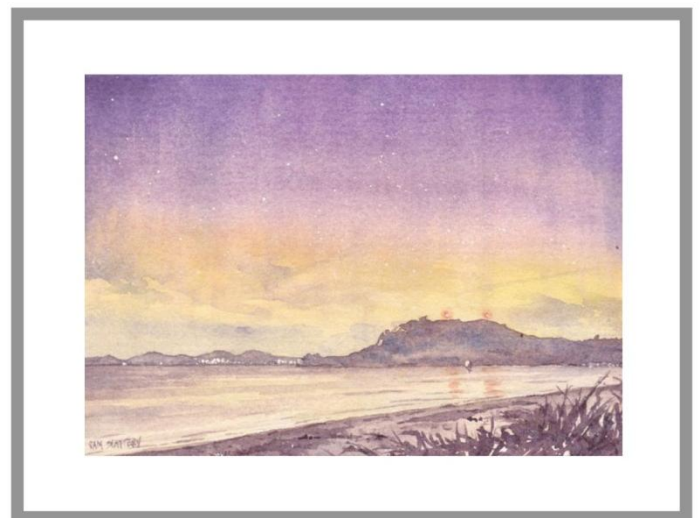
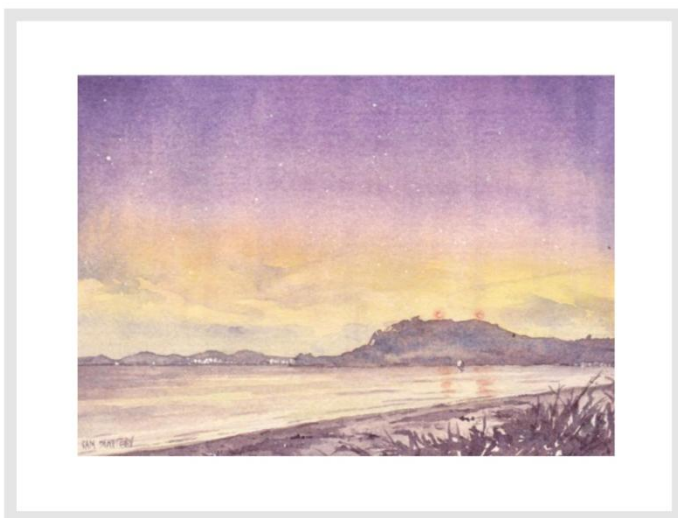
Watercolours on paper should be framed under glass, with an acid-free mat between the painting and the frame, which creates a “breathing space” between the picture and the glass. The painting should never be framed directly against the glass as glass condenses moisture and may cause the growth of mould.

The choice of framing comes down to personal taste, however, the frame that you choose for your painting can either “make it” or “break it”. Sometimes even a not so good painting can look 100% better if the framing is carefully chosen.

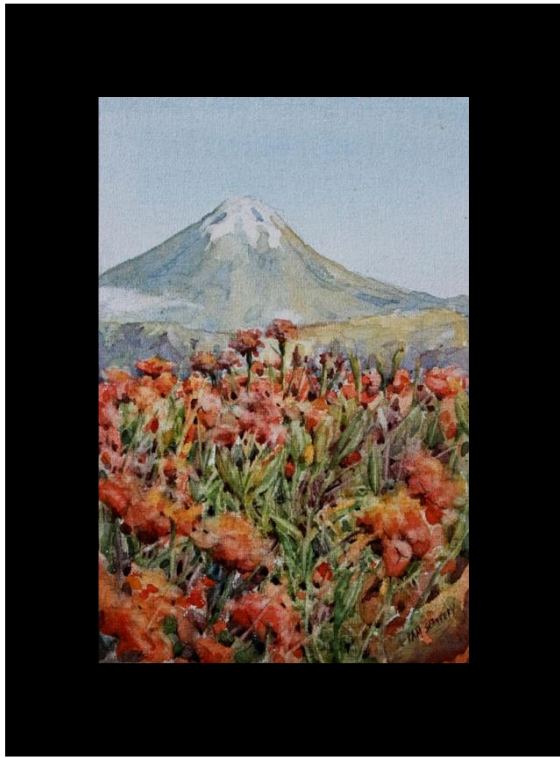
Some examples of good and bad choices in framing are shown below:



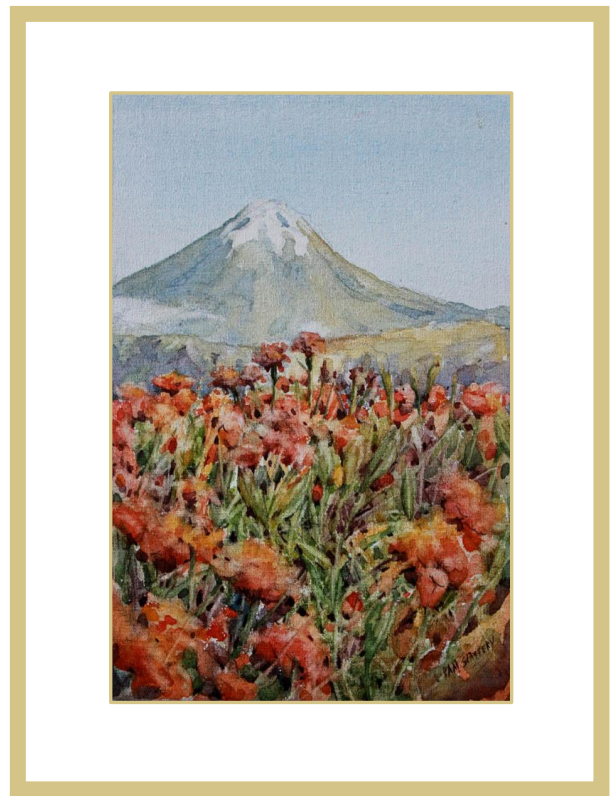
WRONG: The frame and mat are too overpowering for the painting.



BETTER: These lighter frames and mats enhance the artwork

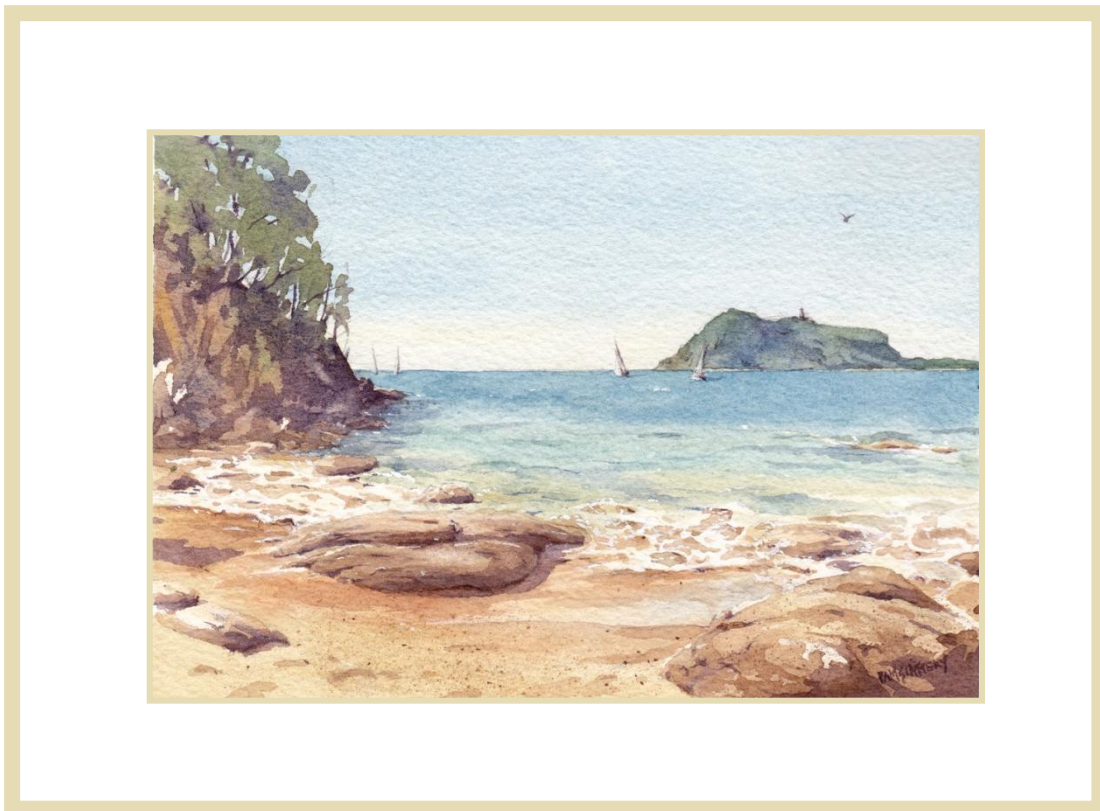


WRONG: This dark frame is too heavy for this soft watercolour



BETTER: A light coloured mat and frame enhance the painting.

For “View to Barrenjoey Head, Pittwater” (below), a light coloured mat (white, off-white or cream) about 6cm wide or wider, and maybe a light coloured timber frame (with a “beachy” feel. You could also have an inner mat in a complementary colour, but this will cost more. Any good framer should be able to advise you.



PAM SLATTERY

Website: www.pamslattery.com.au

Facebook: <https://www.facebook.com/pamslatteryartist>